

FACTORY • LOGISTICS  
INFRASTRUCTURE • TRANSPORT  
PUBLIC SPACES • BUILDINGS

## TURNSTILES

# TURNSTILE HHTI FULLY AUTOMATIC



**Turnstile used for disabled pedestrian access control.**

### ADVANTAGES

---

#### FAST AND SAFE

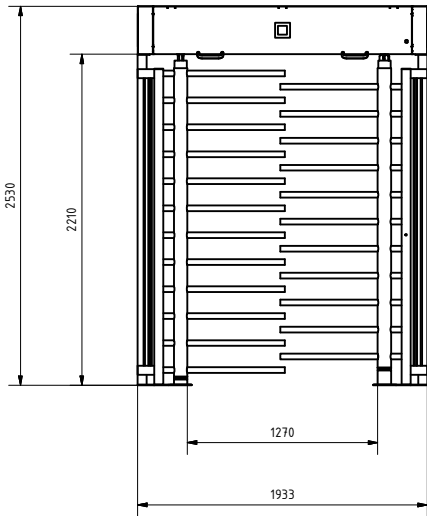
The turnstiles are designed for continuous operation and can be successfully used in areas with High frequency passages. Suitable areas: factories, commercial buildings, harbours etc.

The turnstile is suitable for disabled people etc. Each spindle is operated by an individual motor/mechanism

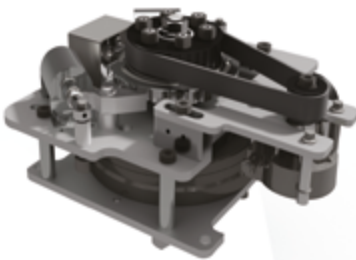
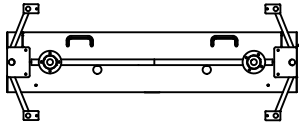
#### MODE OF OPERATION

The two-way mechanism enables traffic control in both directions or in a selected direction.

The LED pictograms (red cross & green arrow), easily visible and situated on the cabinet indicate the status of the turnstile (locked/unlocked). The red cross indicates passage closure, the green arrow indicates passage opening. The turnstile mechanism allows smooth entrance/exit and is equipped with a mechanical, as well as a magnetic lock for optimal security. The spindle is motorised, ensuring smooth entrance/exit for the user.



**HHT1**



Turnstile mechanism – high standard brake with short response time.



Electrical cabinet equipped with a Halsang H104 controller and frequency modulators

## FEATURES

- Turnstile mechanism is made of high quality steel and equipped with high quality bearings. Brake/locking system has a very short response time (from 0.03 to 0.12s). In the event of a power failure, the mechanism will be automatically unlocked to allow safe exit from the building and will prevent entry.
- The control (H104) has a wide range of options allowing various individual requirements
- Easy access for service and maintenance in the cabinet
- Illumination of passage as standard (controlled by a light sensor)
- Pictogram (red/green) as standard on both sides of the cabinet
- Prepared for external card reader
- Stainless steel spindle and cabinet as standard
- Cage in HDG as standard
- 15-20 passages/min

## TECHNICAL DESCRIPTION

Total height	2,530 mm
	Other dimensions: on request.
Power supply voltage	230V AC, 50 Hz
Power consumption	max 120 W
Current	5A
Feedback signal	Potential free contact – no/nc
Opening signal	Signal (max. 1 sec)
Operation environment	-25° to +50° C
Weight	405 kg
Relative humidity	Environmental 10-80%
IP protection rating	44
Cabinet	Stainless steel, 1.5 mm
Cage Profiles	100x50x3 mm, 60x60x2 mm, 60x30x2 mm and 25x25x1.5 mm
Spindle core tube	90x3 mm
Spindle arms	38x2 mm

## OPTIONS

- Overclimbing protection
- Fencing connection on post
- Roof in polycarbonate
- Powder coated cage in RAL colors.